

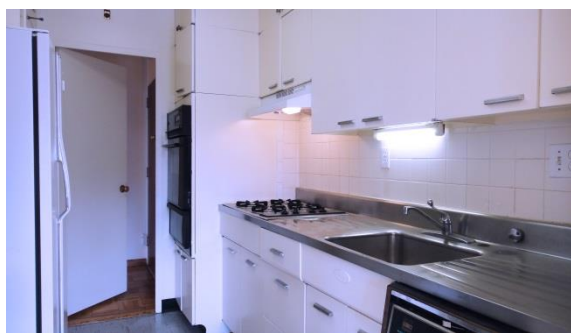
630

POTOMAC PLAZA

Offered at \$465,000



- 1242 square feet with corner floor plan offering 2 sides of light and big sunny picture windows
- Scenic vista on high floor of gardens, statue, Kennedy Center
- Spacious and bright 2 bedroom, 2 baths
- Separate dining area with large window
- Functional galley-style kitchen
- Ample closet space throughout
- Entry foyer
- Parking available in the building for rent - \$135 after waiting list and rental parking nearby
- Sold in "as is" condition



WINSTON REAL ESTATE

Over 40 Years of Real Estate Experience

Call GIGI WINSTON - Broker, GRI®
(202) 333-4167 | winstonre.com

FINANCIAL INFORMATION

MONTHLY COOP FEE \$ 1,280
(includes HVAC maintenance, property taxes & utilities)



To learn more, visit our web site or
scan the code with a smart phone.



POTOMAC PLAZA

THE AMENITIES ARE BOUNDLESS

630

POTOMAC PLAZA

2475 Virginia Ave. NW, Washington DC 20037

Work out in the exercise room. Conduct your next meeting in the conference room. Plan and host your 4th of July party on the rooftop terrace! Other amenities include 24 hour desk service, garage attendants, and laundry facilities.

Potomac Plaza is a residence cooperative located in the historic Foggy Bottom District of Washington DC. Located a block from the Foggy Bottom Metro station, it is close to the Watergate shops including CVS and is within easy walking distance of the Kennedy Center, the Mall, Rock Creek Park, Georgetown Waterfront, Whole Foods and Trader Joes.

